

When to replace:

If the LCD display is unresponsive or erratic when pressing the Up, Down or Center Keypad buttons.

Tools Required:

- Curved Tweezers
- Coin or screwdriver (to remove Base Captive Screw)

Replacement Parts:

- **D057-0043-001** : Keypad (Membrane Switch Assembly)

Disassembly:

1. Loosen the Base Captive Screw with a coin or screwdriver and carefully remove the white base from the colored body of the unit.
2. Disconnect the Motor Flex Cable connector as in **Figure 1** and set the colored body assembly aside.

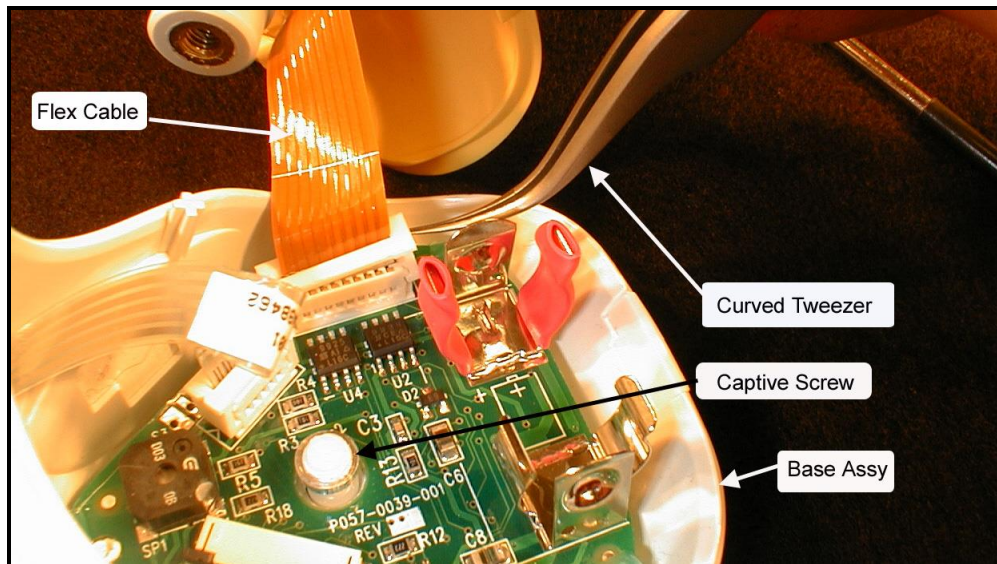


Figure 1 Flex Cable Connection and Base Captive Screw

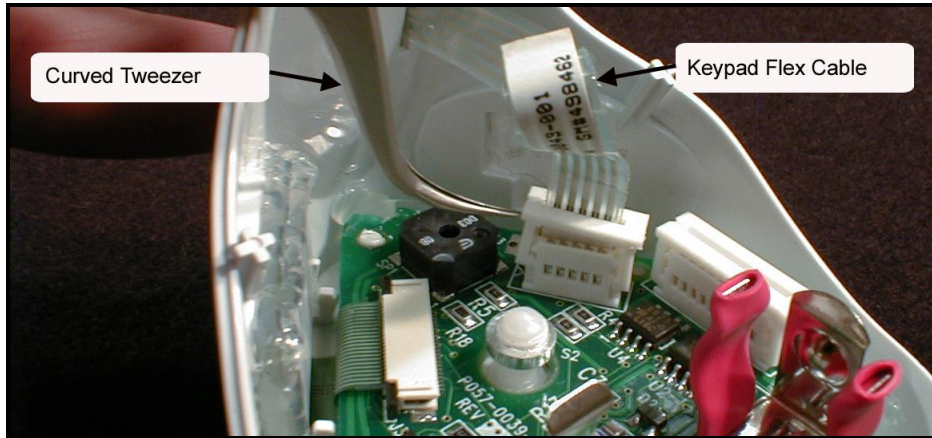


Figure 2 Disconnecting Keypad Flex Cable

3. Disconnect the Keypad Flex Cable from the PCB connector.
4. Remove Keypad Assembly from the front of the Base Assembly. Be sure to remove any adhesive remaining on the base before installing new keypad.



Figure 3 Peeling Keypad assembly from Base

Reassembly:

1. Install the new Keypad Assembly as shown in **Figure 4**. Be careful when aligning to base, once adhered, it cannot be removed without damage!

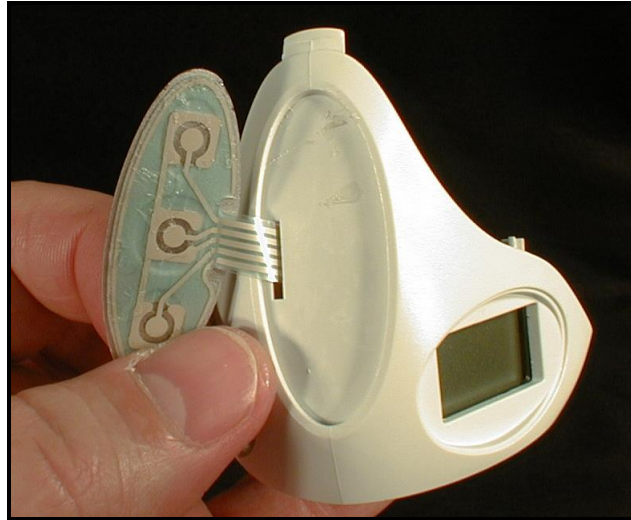


Figure 4 Inserting keypad assembly to base

2. Re- connect the Keypad Flex Cable into its' PCB connector and lock into place.
 - If the LCD display does not respond to the Keypad, then the Keypad Flex Cable may be installed backwards.

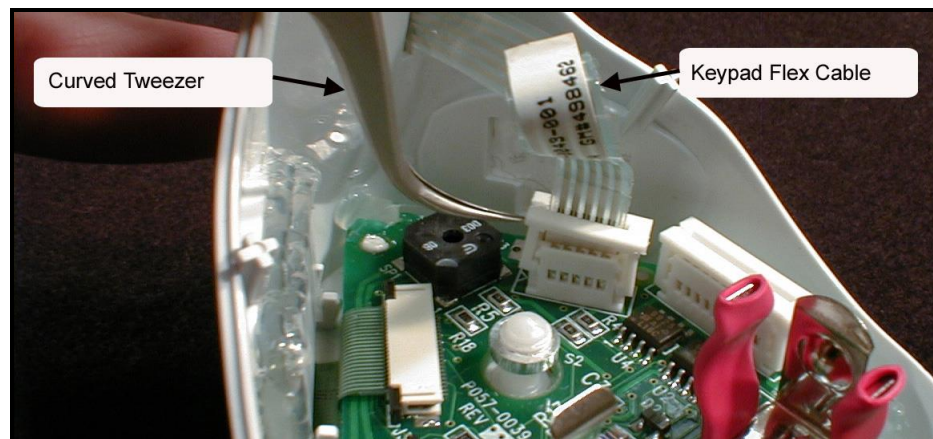


Figure 5 Inserting Keypad Flex Cable to PCB connector

3. Re- connect the Motor Flex Cable (gold) from colored body assembly into its' PCB socket and lock into place as in **Figure 5**.
 - When changing volume, if the LCD display continues blinking after the plunger is depressed and no motor action is heard, the Motor Flex Cable may be installed backwards. Silver leads should face inside.

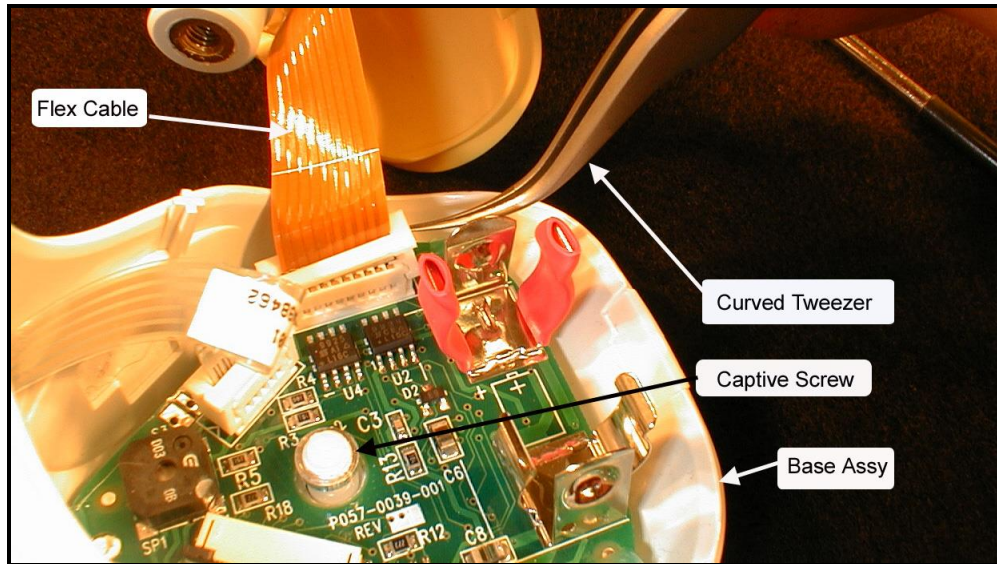


Figure 5 Inserting Keypad Flex Cable to PCB connector

4. Home the unit by pressing the Up and Down arrow keys simultaneously, until "CAL" Shows in the display. Then press the plunger down **twice** to and hold until you hear three beeps.
5. Reassemble the Base Assembly to the Upper Body and tighten the Base Captive Screw with a coin or screwdriver.

