

## PC Board Replacement

### Disassembly:

**NOTE: The PCB is sensitive to static electricity damage. This procedure must be carried out at an Electro Static Discharge (ESD) workstation.**

1. Loosen the Captive Screw and carefully remove the bottom from the top of the unit. There is a Flex Cable electrical connector between the parts.

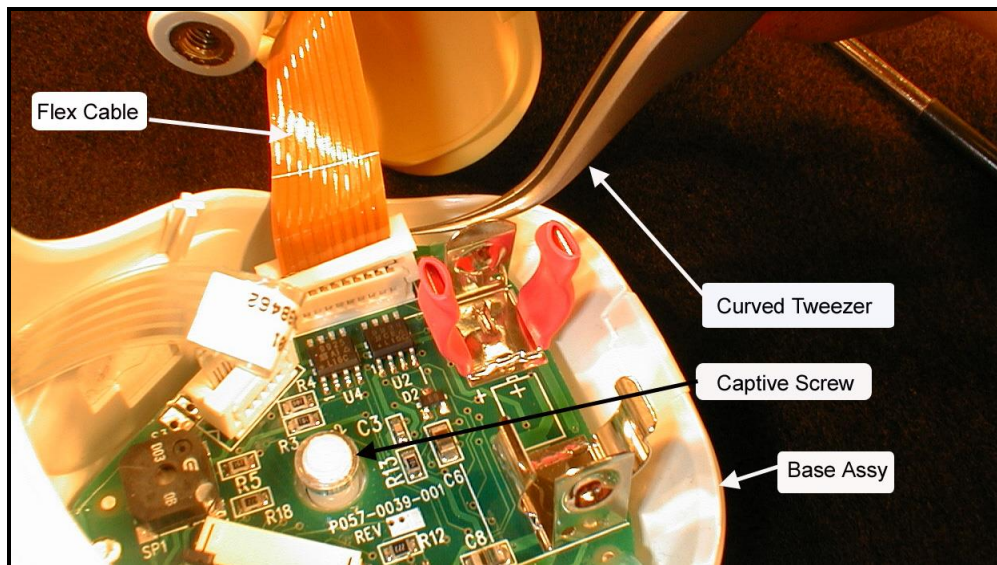


Figure 1 Flex Cable Connection and Captive Screw

2. Remove the battery.
3. Disconnect the Flex Cable from the PC board and set the Upper Body assembly aside.

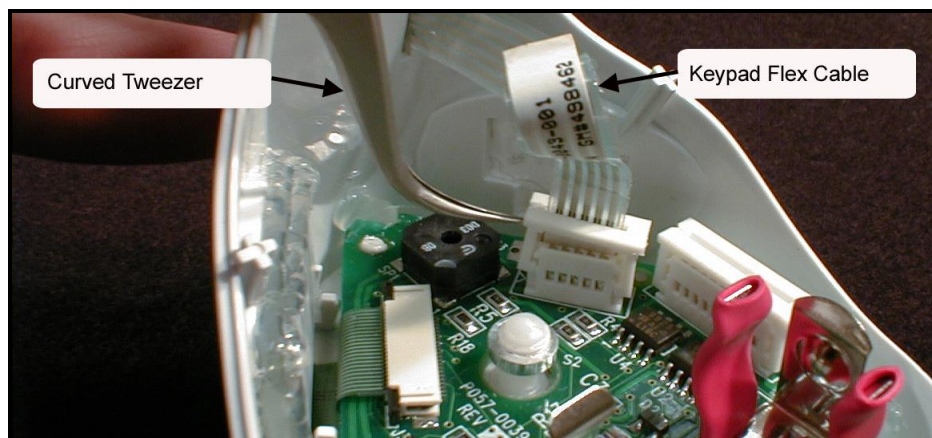
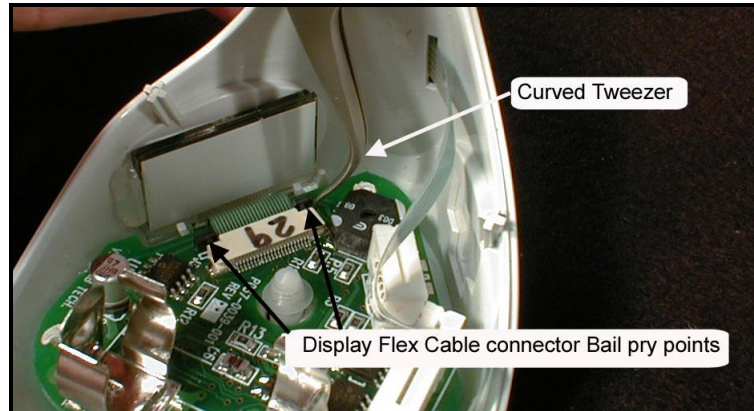


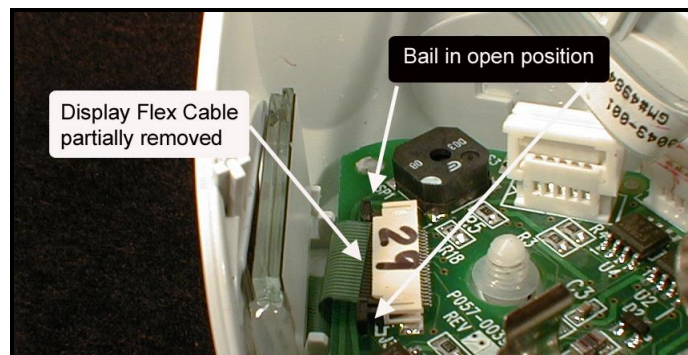
Figure 2 Disconnecting Keypad Flex Cable

4. Disconnect the Flex Cable for the Keypad Assembly from the PCB.



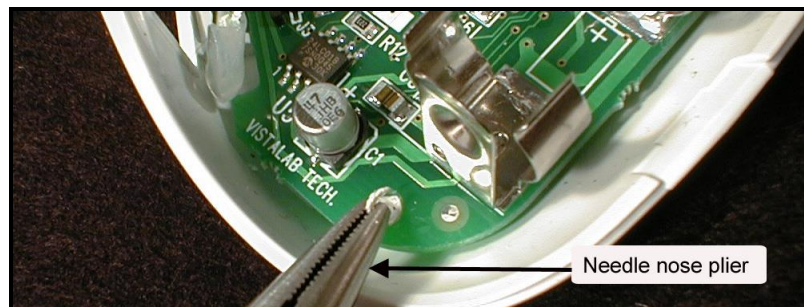
**Figure 3 Loosening the Display connector from the Display Flex Cable**

5. Using the Curved Tweezers, slide the black plastic tabs on either side of the Display Flex Cable PCB connector towards the LCD Display.



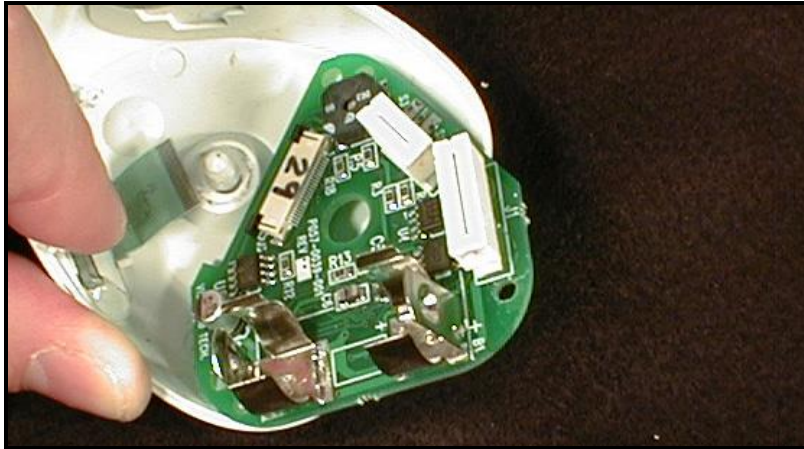
**Figure 4 Sliding the Display Flex Cable from the PCB connector**

6. Slide the Display Flex Cable from the PCB connector.



**Figure 5 Break the PCB standoffs**

7. Using needle nose pliers break the plastic standoffs, which hold the PCB to the base assembly.

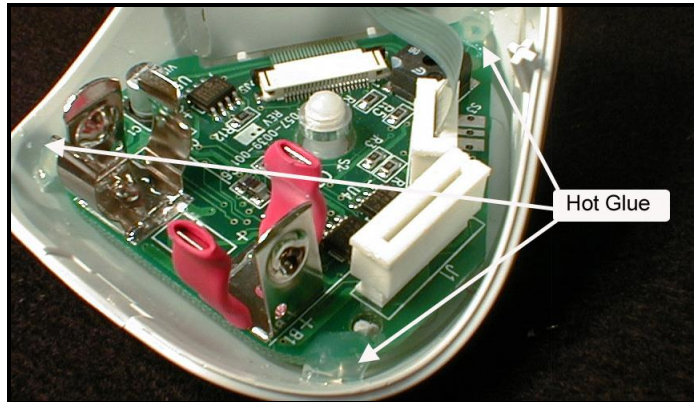


**Figure 6 PCB removed from the Base assembly**

8. Remove the PCB from the Base Assembly.

**Reassembly:**

1. Working at the ESD station, remove the new PCB assembly from its protective bag.
2. Place the PCB assembly in the Base assembly and work the Display Flex Cable in to its connector on the PCB. See Figure 4 above.
3. Locate the PCB on the studs that were broken off in step 7 above.



**Figure 7 PCB glued in to the Base Assembly**

4. Using a hot glue gun, glue the PCB in to place as shown.
5. Install the battery – if a new PCB is used it should display E-20.
6. Using the programming station, program the PCB for the volume of this pipette and calibrate as directed by the programming software.
7. Reassemble the Base Assembly to the Upper Body and tighten the Captive Screw with a coin or screwdriver.

