

When to replace:

If the LCD display is blank, or has dead pixels (confirm battery and motor are operating)

Tools Required:

- Tweezers or razor blade
- Coin or screwdriver (to remove Base Captive Screw)

Replacement Parts:

- **C115-0048-001** : LCD Screen for Ovation ESC, E8, E12
- **C115-0051-001** : LCD Screen for Ovation QS (adjustable)

Disassembly:

1. Loosen the Captive Screw with a coin or screwdriver and carefully remove the white base from the colored body of the unit.
2. Remove the battery and disconnect the Motor Flex Cable connector as in **Figure 1** and set the colored body assembly aside.

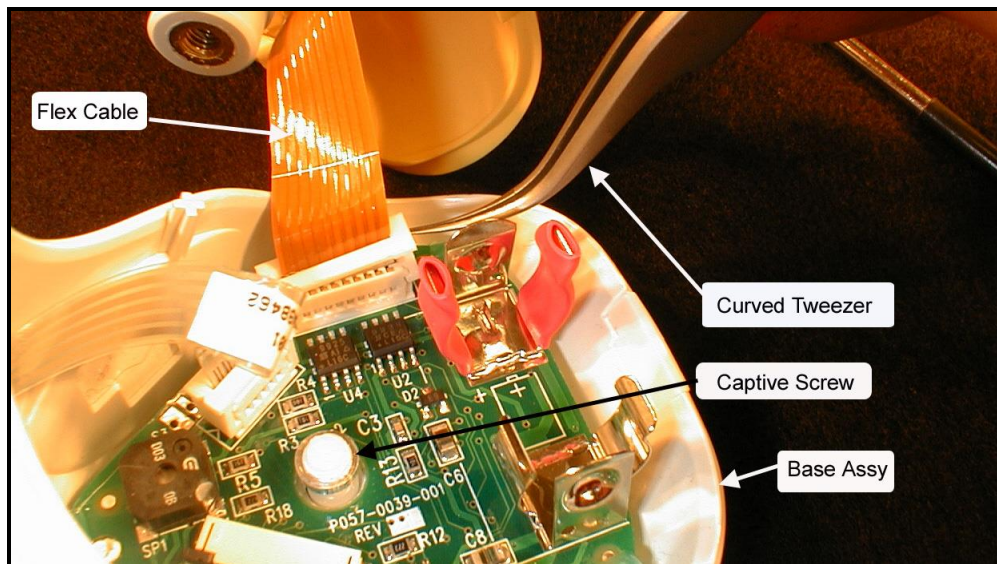


Figure 1: Flex Cable Connection and Captive Screw

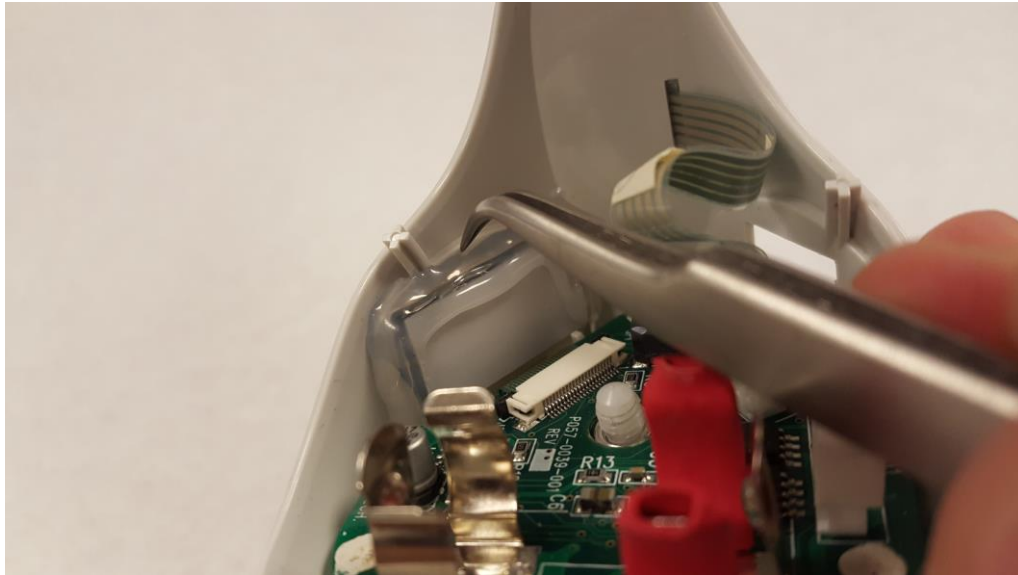


Figure 2: Disconnecting LCD

3. Remove adhesive from perimeter of the LCD screen with tweezers or razor blade. Make sure to remove completely

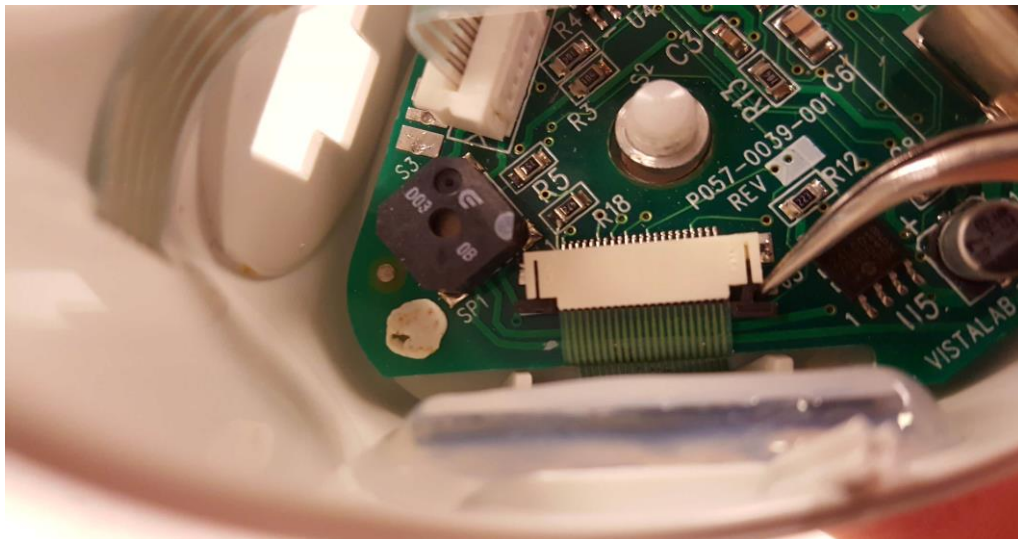


Figure 3: Disconnecting LCD

4. Unlock the both sides of the connector to remove the LCD ribbon.

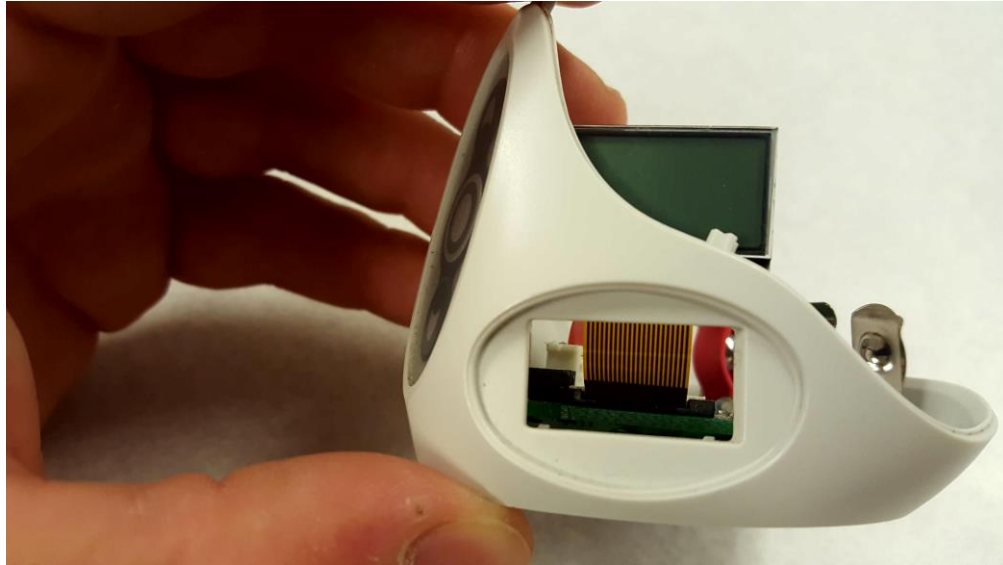


Figure 4: Installing new LCD screen

5. Install the new LCD screen by inserting ribbon into front of the connector. Lock the ribbon into place by closing the 2 sides of the connector.

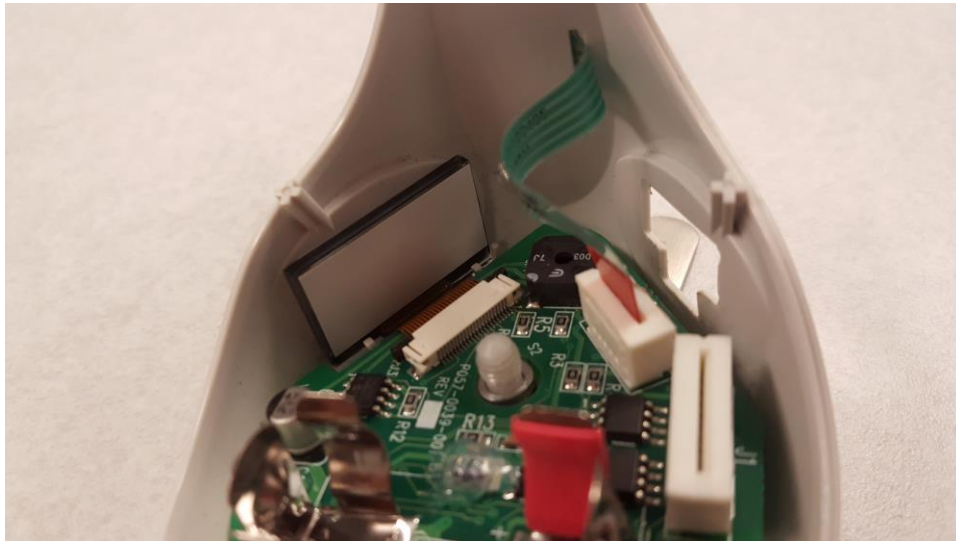


Figure 5: Glue new LCD into place

6. Using hot glue melt, glue the LCD into place along the outer perimeter of the screen. Be sure not to get any glue on the front of the screen.